

Researching Church History
at the Plainfield Library

ONLINE RESOURCES

Will County Genealogy Web
<http://will.illinoisgenweb.org>

Kendall Co. Historical Society www.kchs.us

FamilySearch www.familysearch.org

Evangelical Lutheran Church in America
<http://archive.elca.org/archives>

Garrett Seminary Archives: www.garrett.edu

Baptist Roots
<http://homepages.rootsweb.ancestry.com/~baptist/index.html>

Presbyterian Historical Society
<http://history.pcusa.org/>

Quaker Records
www.rootsweb.ancestry.com/~quakers/

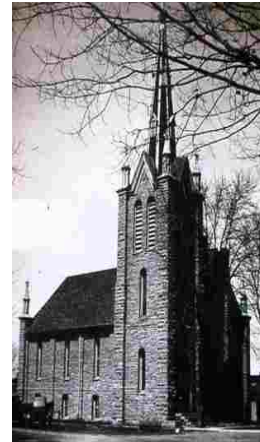
Chicago Catholic Church Records
<http://archives.archchicago.org/>

About.com
http://genealogy.about.com/od/church_records/

Cyndi's List <http://www.cyndislist.com/religion/>



Plainfield is known as the 'Village of Churches.' Once home to several influential early Methodist circuit-riding preachers; including Rev. Jesse Walker and Rev. Stephen R. Beggs; the United Methodist Church has celebrated more than 175 years of continuous worship in Plainfield.



Many denominations call Plainfield home. Plymouth Congregational Church, built in 1850, is the oldest continuously run church in Will Co.

Wheatland Presbyterian Church has celebrated their faith since 1846. Their current church opened October 21, 1906.

The Sharon Methodist Church on Lockport Street was built in the 1850s and still welcomes new members today.

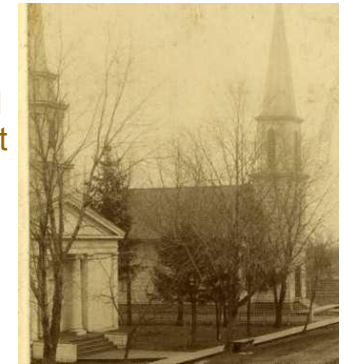
St. Mary Immaculate Catholic Church has held Mass in the village since 1906. Its current building was constructed after the 1990 tornado destroyed the 1970s church.

**Researching Plainfield
Church History at the
Plainfield Library**

Did you know the Plainfield Library has resources available for finding your ancestor's religious past?

Our Local History Collection can help you research Plainfield's church history as well as teach you how to research church records within any community.

Births, marriages and deaths are just some of the types of records available from churches and synagogues.



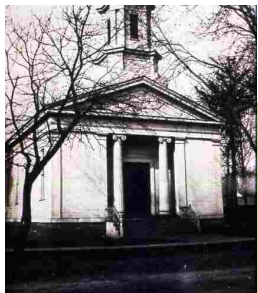
Religious records can include a wealth of information such as names and place of birth of parents, names of witnesses, occupations and more.

Visit the Local History Collection or stop by the Adult Reference Desk to learn more.



Plainfield Public Library District
15025 S. Illinois Street
Plainfield, IL 60544
Phone: 815-436-6639
Fax: 815-439-2878
www.plainfieldpubliclibrary.org





The Plymouth Congregational Church, built in 1850, is the oldest continuously run church in Will County. The church was struck by lightning in Oct. 1887.

BOOKS

Cathedral of St. Raymond Nonnatus Dedication and Joliet Archdiocese Church Directory

LH 282.77325 HIS

St. Mary Immaculate Church Dedication Plainfield, Illinois 1971

LH 282.77325 SOL

One Hundred Years First Presbyterian Church of DuPage 1833-1933

LH 258.176 ONE

First Presbyterian Church Celebrating 150 Years 1833-1958

LH 285.176 HIS

Thru the Years Serving as a Reverend, Minister, Pastor and Friend of the United Methodist Church Plainfield, Illinois

LH 287.6 GRE

Plainfield Methodist Church 125th Anniversary 1829-1954

LH 287.631 PLA

Plainfield United Methodist Church History with Pictures

LH 287.6773 GRE

Wheatland Presbyterian Church Cemetery Index

Gen Ref 929.5 WHE

Au-Sable Grove Presbyterian Church Cemetery Index

Gen Ref 929.5 AUS

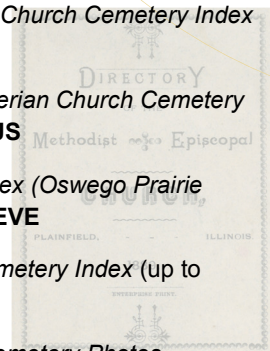
Evergreen Cemetery Index (Oswego Prairie Church)

Gen Ref 929.5 EVE

St. Mary Immaculate Cemetery Index (up to 2000)

Zion Lutheran Church Cemetery Photos

Directory of the United Methodist Episcopal Church Plainfield, Illinois 1889 (digitized)



Electronic, Print and Microfilm Resources Available at the Library



First Baptist Church Fire
Dec 22, 1914
Photo Courtesy of Philip Luce

150 Years Along the Fox Gen Ref 977.3263 ONE

History of Plainfield Then and Now Gen Ref 977.3 HIS

Plainfield Post Card History LH 977.3 SMI

Will County Post Card History LH 977.325 BEL

Joliet Post Card History LH 977.325 WOL

Illustrated History of Will County LH 977.325 MAU

History of Will County 2 volumes LH 988.325 STE

Illinois state government did not begin requesting the registration of births and deaths until 1877 and even then, it wasn't mandatory until 1914. Church records are sometimes the only source of information for these types of records when a birth or death record cannot be found or the records are earlier than 1877.

Church directories, jubilee books, church school records and yearbooks can help fill in the gaps between baptism records and death records.

Unfortunately, churches close and parishes merge. Records can get lost or destroyed. When this happens newspapers become an important tool in your search.

Newspapers are a great source of church news. Church service schedules, new pastors, fires, and building projects are just a sampling of the types of news you can find week to week in the local paper.

NEWSPAPERS ON MICROFILM

Plainfield Enterprise 1893-present (incomplete)

Kendall County Record 5/07/1864-3/19/1930

Joliet True Democrat 1860-1867 (missing 1863-64)

Joliet Weekly Republican 1871-1878 (missing 1872-73)

Joliet Morning News 5/14/1877-12/30/1881

Joliet Weekly Sun 7/05/1875-12/25/1880

Joliet Daily Sun 7/31/1877-12/29/1880

Joliet Weekly 2/03/1893-11/29/1906

Joliet Daily News 1/02/1883-6/03/1900

Joliet Daily Republican 11/13/1901-12/31/1904

Joliet Evening Herald 5/01/1904-1/30/1909

Joliet Herald 5/17/1914-4/30/1915

Joliet Herald News 9/01/1915-4/30/1930

The Plainfield Library also offers access to several online newspaper archives. See the Adult Reference Desk for more information.



This photo is from the rededication of the Wheatland Presbyterian Church on Oct 21, 1906. Photo Courtesy of Joel Craig